



Certificate no. 4001132

TB206
PRODUCT DATA
054/212591
PA05/05325

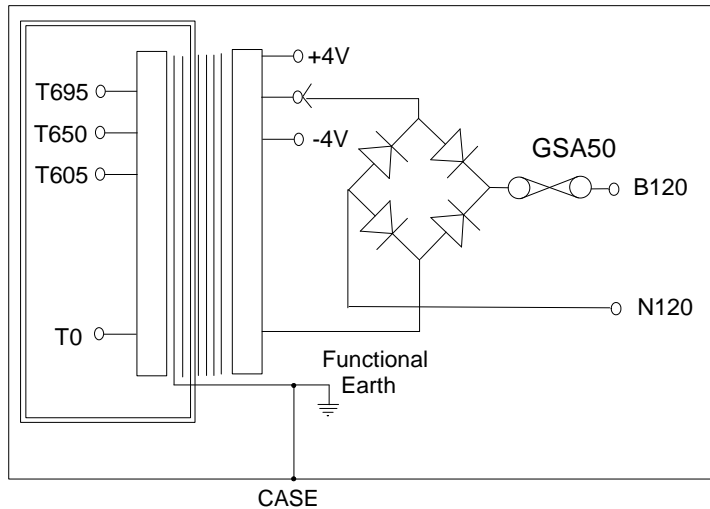
Whitting Valley Road, Old Whittington, Chesterfield, Derbyshire S41 9EY UK
 Telephone: +44 (0) 1246 264260 Fax: +44 (0) 1246 455281
 Web: www.trans-tronic.co.uk E mail: sales@trans-tronic.co.uk

COIL WINDING – TRANSFORMER DESIGN & MANUFACTURE

Description:	Class II Hybrid Transformer Rectifier for Point Machines NR/L2/SIG/30007 BR865 type B 650/120v @ 5A DC
--------------	---



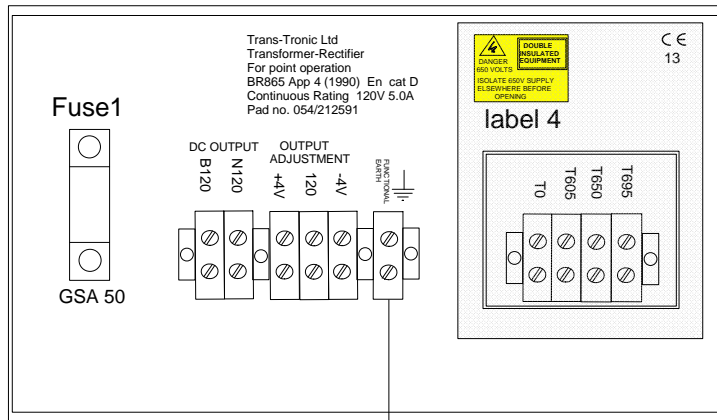
Dimensions	405x270x 200mm high	Weight	25Kg	Colour	BS381c shade 632 Dark Admiralty Grey
General arrangement drawing	GA-TB206 overleaf			O&M Manual:	Trans-Tronic ClassII-Hybrid Point machine Tj
Primary (Input) ClassII	T0-T605-T650-T695			Output ClassI	B120 N120 with ±4v taps 2.5A continuous
Primary terminals	Screw up clamp 0.5 -6mm ²			Secondary terminals	Screw up clamp 0.5-10mm ²
Functional earth	Screw up clamp 0.5-10mm ²			Enclosure	IP32
Suitable for driving 2x style 63 point motors, 2 x HW2xxx series, 2 x HPSS point motors, 4 x clamp lock point motors , 1 x Hydrive point motor					
Primary resistance 4.8ohms @ 650V Primary Inductance 12mH			Secondary resistance 0.19 ohms Secondary Inductance 0.65mH		
Duty cycle 1 70A surge for 0.1 seconds 30A clutch slipping 0.4 seconds 20A Drive for 10 seconds Every 1 minutes		Duty cycle 2 70A surge for 0.1 seconds 40A clutch slipping 0.4 seconds 20A Drive for 10 seconds Every 2 minutes		Duty cycle 3 70A surge for 0.1 seconds 40A clutch slipping 0.4 seconds 24A Drive for 10 seconds Every 3 minutes	
Input current at 650V 1.31A @ 5.0A Continuous Output 5.1A @ 20A Drive Output 10.2A @ 40A Clutch slipping Output			Output Voltage No load <134V 20A DC Output 120±2V 40A DC Output >110V		
Peak inrush current 9.2x FLC (47A at 650V)			I ² t	17 A ² s	X/R ratio 0.51
Insulation resistance (500v) Primary to body >100M ohms Secondary to body >100M ohms Primary to secondary >100M ohms			Dielectric strength Primary to body 5.2Kv Secondary to body 2.8Kv Primary to secondary 5.2Kv		Impulse withstand 8Kv
Recommended fuse Protection BS88 & 10x38gG IEC 60269-1 & 2 6A					
Operational temperature range -20°C to +60°C			Humidity Up to 100% RH		
Altitude <2000 metres above sea level			Issue 3 01/08/2013		



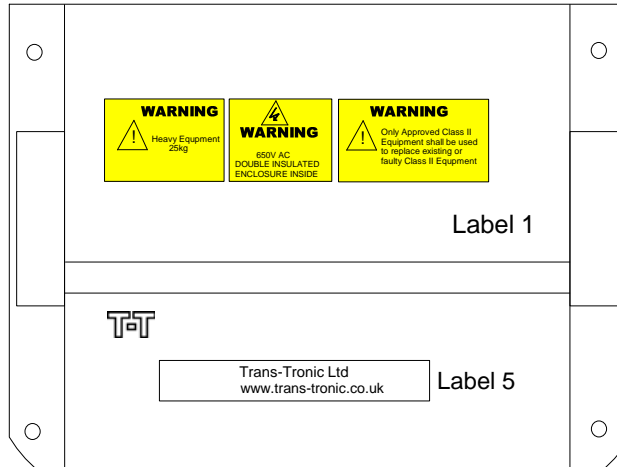
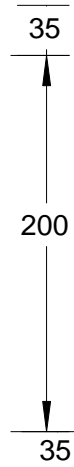
CASE

Case 1

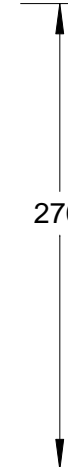
Cover 1



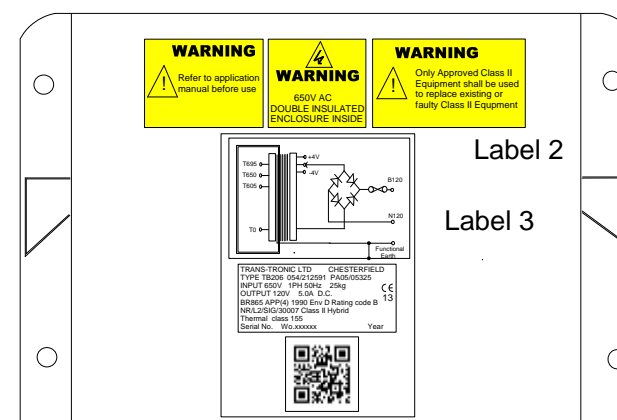
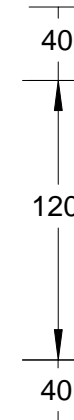
Internal view with case lid removed



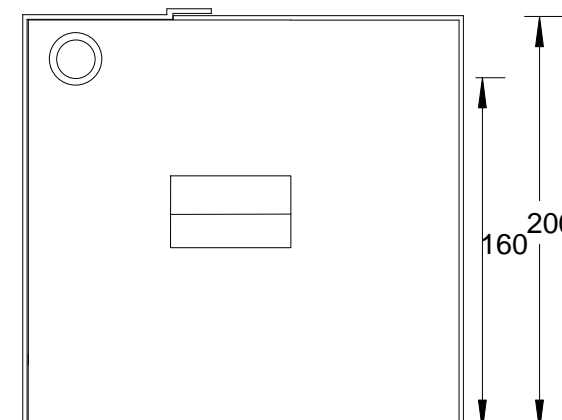
Top view



Gland holes
25mm dia
2 hole LHS
1 holes RHS



375mm
405mm
Front view



200mm
160
200
Side view
Fixing holes
8mm dia

Item	Description	Part No.
Case 1	Trans/Rect case	21-CASE-TR2DG
Trans 1	650/120v 5A classII	TT4349
Cover 1	TR2 Poly carb	21-TR2-COV1
Fuse1	Rectifier Fuse GSA50	01-50A-GSA
Label 1	650VClassIITR2top	02-class2-650TR2top
Label 2	650VClassIITR2front	02-Class2-650TR2front
Label 3	Circuit diagram + Rating plate	TB206CD+RP
Label 4	650VClassII internal	02-class2-650int
Label 5	TRANS-TRONIC	02-Trans-Tronic

Trans-Tronic Ltd
Whitting Valley Road, Chesterfield, S41 9EY
Tel: 01246 264260 Fax: 01246 455281

TITLE GA drawing for ClassII Hybrid points machine
650/120V @ 5A cont DC 054/212591 PA05/05325

SIZE A4	DATE 01/08/2013	DWG NO A4-TB206-GA	REV 5
SCALE		SHEET 1 of 1	